



Motion Solutions for the Pharmaceutical Industry

Precision Motion Solutions for Demanding Pharmaceutical
Environments

PRECISION, RELIABILITY AND HIGH THROUGHPUT IN THE PHARMA INDUSTRY

In the pharmaceutical industry, precision, reliability, and high throughput are non-negotiable. HepcoMotion delivers motion systems engineered for the industry's demanding requirements - from high-speed indexing and flexible layouts to continuous, low-maintenance operation.

Backed by over five decades of innovation, our advanced V guide technology supports high-throughput, accurate, and scalable automation, ensuring consistent performance in every process.

Our extensive product range offers both standard and tailored solutions for every sector in the pharmaceutical industry, including:

-  AUTOMATED ASSEMBLY LINES
-  ASEPTIC PROCESSING
-  PRIMARY AND SECONDARY PACKAGING
-  STERILE FILLING LINES
-  TABLET PRESSING
-  TABLET AND CAPSULE FILLING
-  BLISTER PACKAGING
-  TABLET AND CAPSULE INSPECTION
-  FILLING LINES
-  VIAL AND SYRINGE HANDLING SYSTEMS
-  CLEANROOM PACKAGING AND LABELLING
-  LABELLING

If you're viewing this content offline please use this QR code to access the digital catalogue to interact with this document:



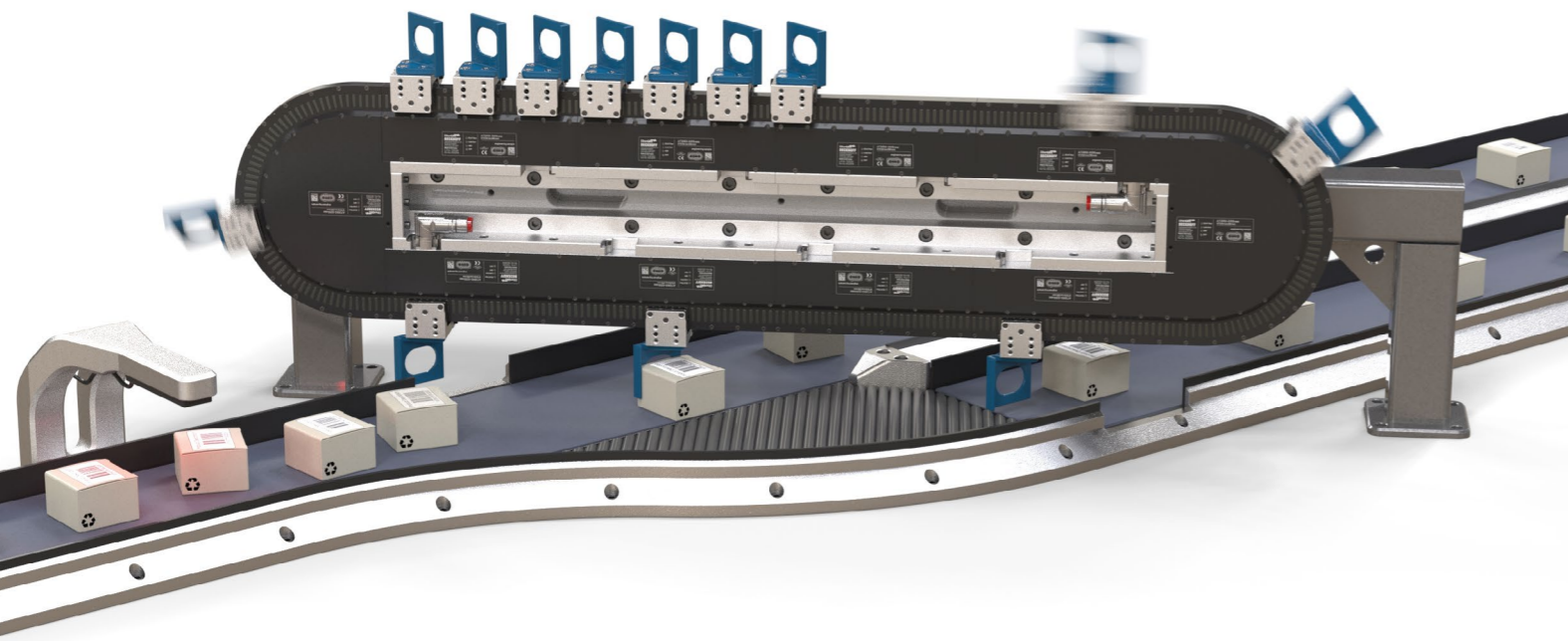
That's why Hepco is relied on by some of the biggest pharmaceutical companies in the world:



OUR PRODUCTS ARE DESIGNED TO MEET YOUR INDUSTRY-SPECIFIC NEEDS

CORROSION RESISTANT

HepcoMotion offers a wide range of stainless steel and corrosion-resistant components, ideal for harsh pharmaceutical settings.



HIGH ACCELERATION, HIGH THROUGHPUT

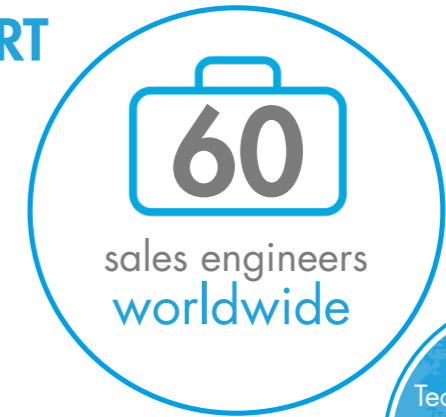
Hepco's V guide systems deliver high acceleration and speeds up to 10m/s for rapid, reliable transitions - ideal for high-performance pharmaceutical indexing.

ACCURATE AND REPEATABLE

Hepco's high-rigidity V guide systems deliver the precision essential for pharmaceutical tasks such as dosing, filling, inspection, and handling syringes, pens, and vials, maintaining accuracy even at high speeds and under dynamic loads.

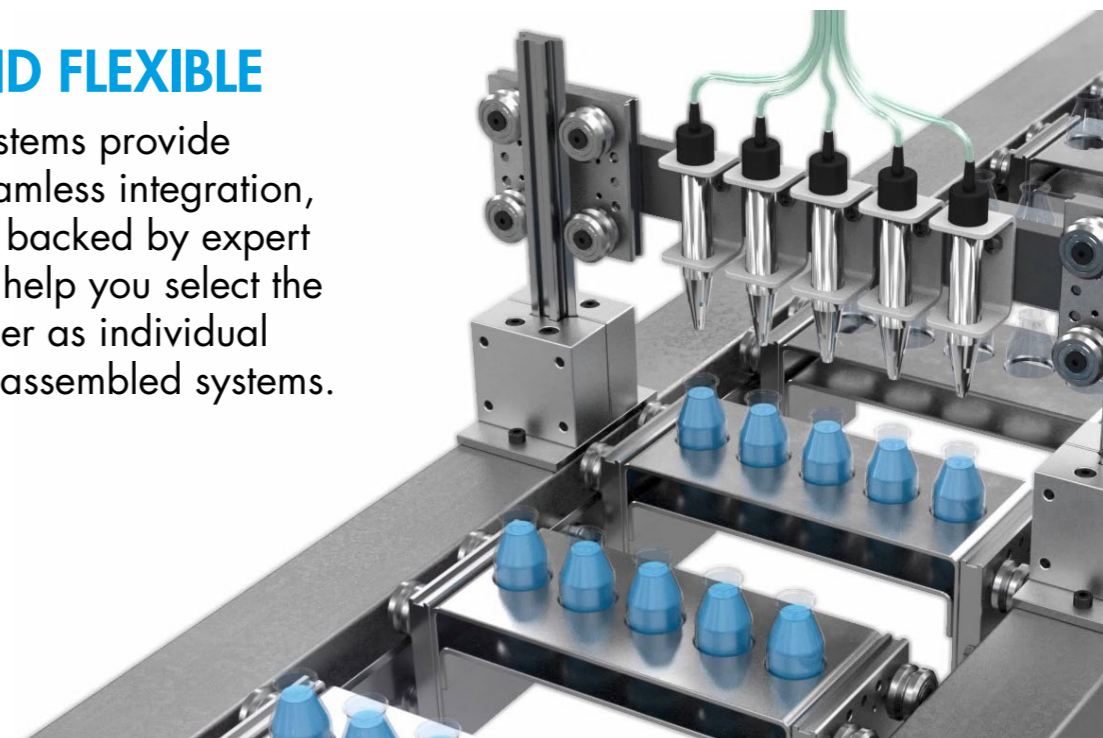
INNOVATION AND SUPPORT

With over five decades of experience and a dedicated in-house R&D team, Hepco sets the industry benchmark through continuous innovation. An extensive product portfolio, bespoke design service, and proven track record help reduce design time, and deliver tailored solutions.



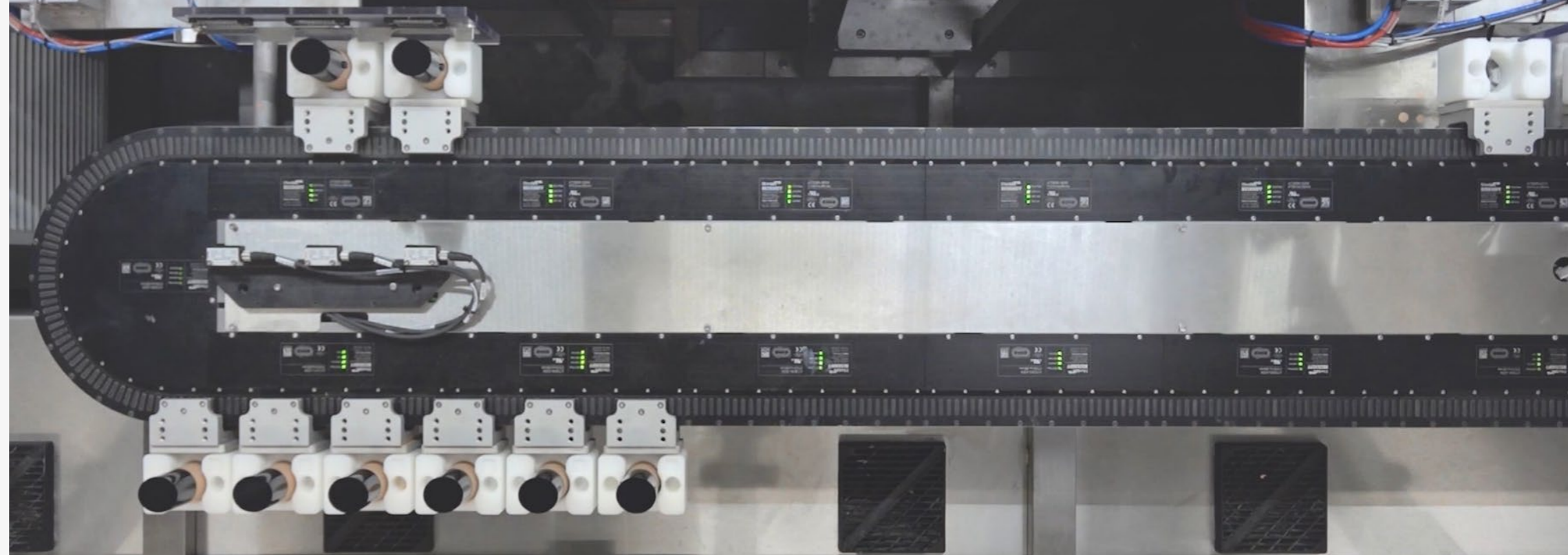
MODULAR AND FLEXIBLE

Hepco's modular systems provide design flexibility, seamless integration, and future-proofing, backed by expert technical support to help you select the right solution, whether as individual components or fully assembled systems.



EFFICIENT MULTI-LINE INTEGRATION

With Hepco's GFX TMS (Track Management System), movers can switch between multiple interconnected tracks, enabling lane diversion, buffering, and re-routing. This allows multiple lines to be combined into a single, scalable process, ideal for pharmaceutical applications demanding high throughput, flexibility, and compact layouts.

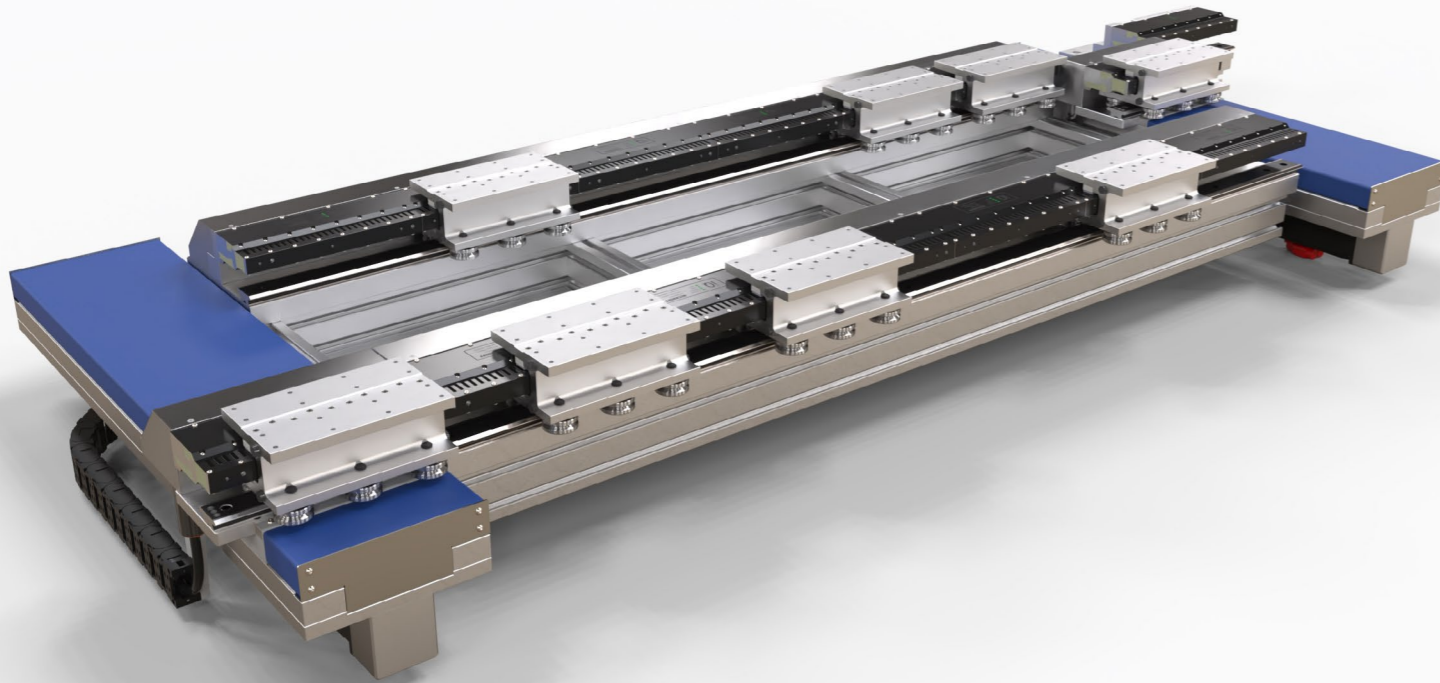


SPACE SAVING

With floorspace at a premium, Hepco's systems offer horizontal, vertical, or stacked configurations – maximising layout efficiency and supporting optimal production flow.

BUILT FOR CHANGE

In fast-paced pharma, GFX delivers smart, flexible manufacturing that adapts to product changeovers and batch variability with ease.



LOW MAINTENANCE

Hepco's self-cleaning V guides, adjustable bearings, and automated lubrication minimise maintenance needs and maximise reliability, keeping pharmaceutical production lines running at peak efficiency.

AT THE HEART OF PHARMA INNOVATION

At the heart of cutting-edge pharmaceutical automation, Hepco delivers precision and reliability – adapting to every new demand, from Covid test kits to weight-loss breakthroughs.



SOLUTIONS FOR EVERY PHARMA APPLICATION

At the core of Hepco's products is its innovative V guide technology. Designed for high speeds and long system life, V guide products are low maintenance and feature a unique self-cleaning action that expels debris, keeping machines running reliably.



With a large range of linear, circular, heavy duty and XYZ systems, as well as actuators and automation solutions, we have products to meet practically any pharmaceutical environment.

LINEAR GUIDES

Corrosion-resistant - Hepco's SL2 stainless steel linear guide is ideal for cleanroom environments and washdown processes.

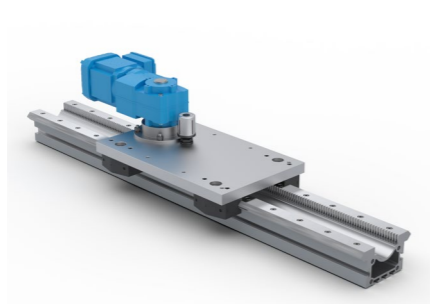
Low maintenance and long life - V guide technology ensures reliable performance with minimal lubrication.

Hygienic by design - With smooth surfaces and minimal dirt traps, HepcoMotion's flat slides are well-suited to hygiene-critical pharmaceutical environments.

Extreme temperature solutions - Hepco's high and low temperature bearings ensure reliability in pharma processes from steam sterilisation to cryogenic applications.



SL2



HDS2



GV3

CURVED RAILS AND TRACK SYSTEMS

Engineered for pharma environments - Stainless steel options available as standard, offering unlimited diameters and sizes.

Flexible layouts - Supports a wide range of configurations including oval, rectangular, S-bend, U-shape, J-shape and more.

Built for precision - Delivers smooth, accurate motion along curved or complex paths.



PRT2 TRACKS



PRT2 RINGS



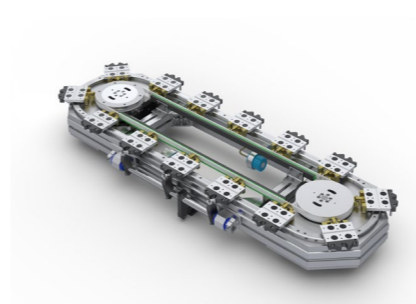
HDRT

DRIVEN TRACK SYSTEMS

Proven in pharmaceutical environments - These ready-to-fit systems reduce design time and cost.

Compact and efficient - DTS allows integration of workstations along and within the track, minimising machine footprint.

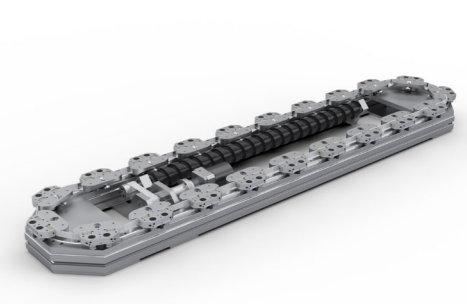
Ideal for continuous or indexing processes - Such as high-speed sorting, bottling, filling, and inspection lines.



DTS



DTS+



DTS2

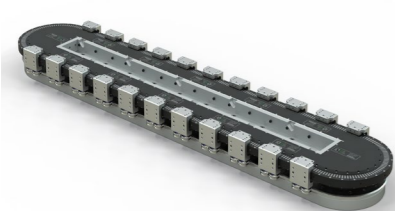
SMART CONVEYER TECHNOLOGY

Hepco's GFX with Beckhoff's XTS enables high-speed, flexible pharma automation through independent mover control and precision mechanical guidance.

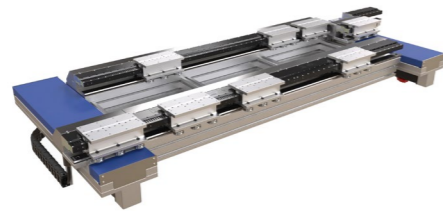
Maximise throughput - Independent mover control keeps lines running efficiently.

Enables rapid changeovers - Adapts instantly to varying formats or batch sizes, allowing on-the-fly product changeovers.

Reliable 24/7 performance - Built for high-speed, high-volume pharmaceutical production.



GFX



GFX-r

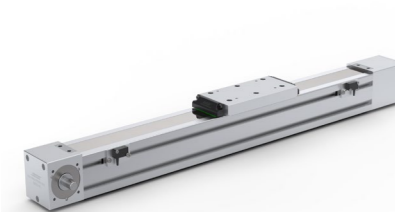


GFX Hygienic

ACTUATORS

Ready-to-fit solutions - Hepco actuators come as fully assembled, ready-to-integrate solutions that minimise installation time.

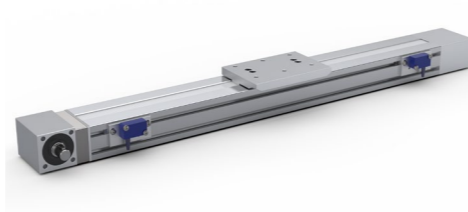
Versatile for pharma applications - Ideal for dosing, filling, inspection, and packaging, with belt-driven, pneumatic, electric linear, and ball screw actuators to suit a wide range of tasks.



SBD



DLS



PDU2

Related Videos and Case Studies



Automated Pharmaceutical System Video



Automated Pharmaceutical System Case Study



Pharmaceutical Packaging Case Study



High Speed Sorting Application Video



High Speed Sorting Application Case Study



Hepco Track Systems in the Battle Against Coronavirus Case Study

If you're viewing this content offline please use this QR code to access the digital catalogue to interact with this document:





HepcoMotion®
Lower Moor Business Park
Tiverton Way Tiverton
Devon England EX16 6TG

Tel: +44 (0)1884 257000
E-mail: sales@hepcotion.com

Motion Solutions for the Pharmaceutical Industry UK 01
© 2025 Hepco Slide Systems Limited
All rights reserved by Hepco Slide Systems Limited, Tiverton, Devon EX16 6TG
Reproduction in whole or part without prior authorisation from Hepco is prohibited
HepcoMotion® is the trading name of Hepco Slide Systems Limited